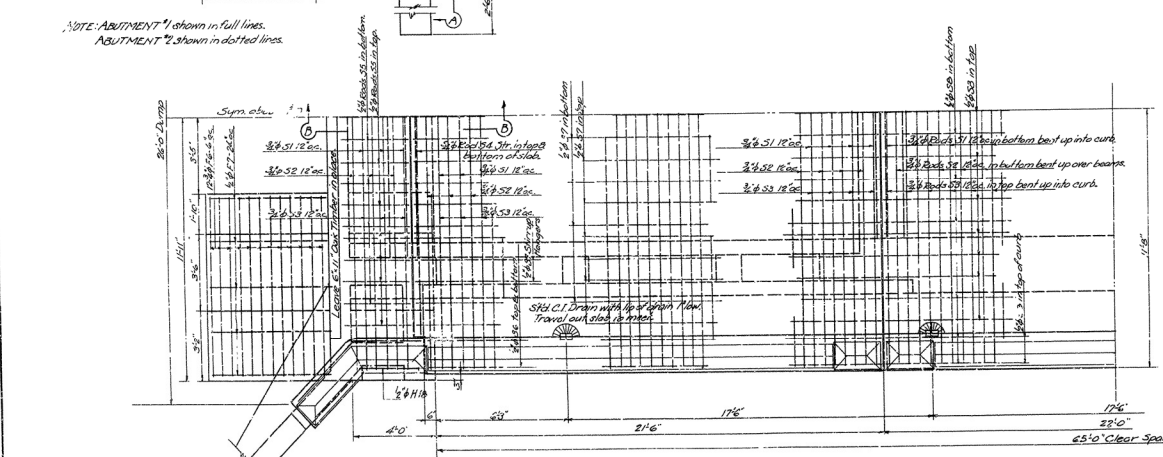
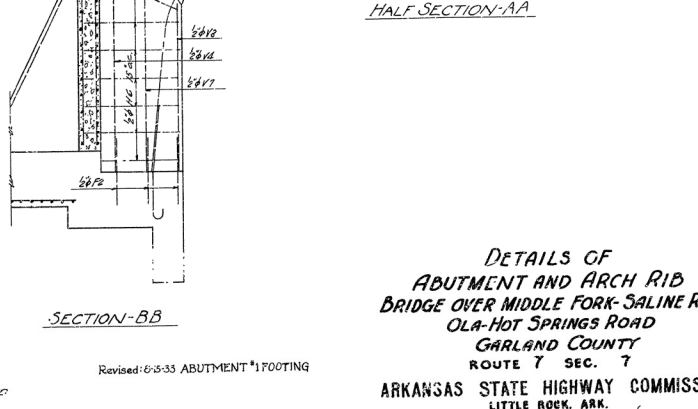
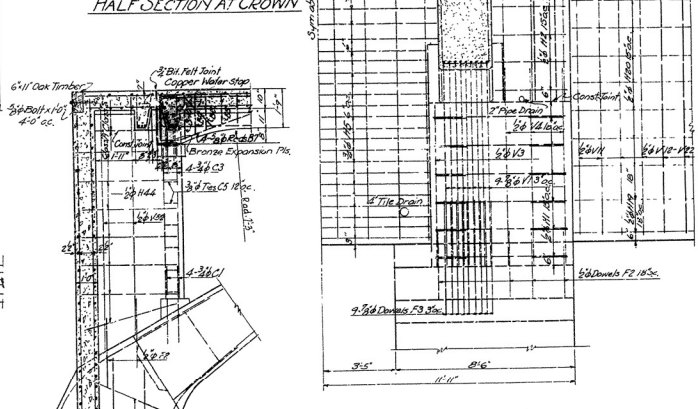
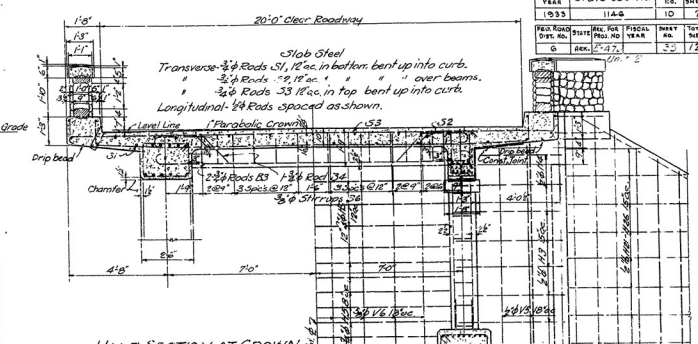
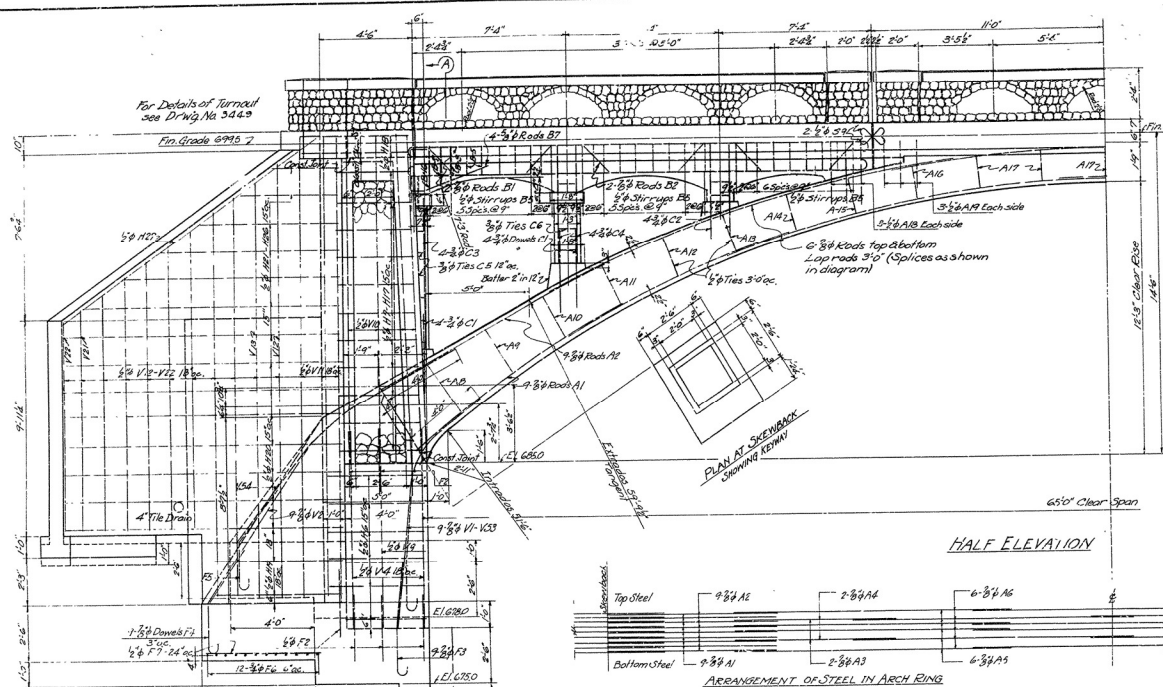


PROJECT	STATE JOB NO.	SHEET	TOTAL
1955	1140	10	21
DATE	REV.	BY	DATE
6	REV.	2-17-57	5-17-57



DETAILS OF  
ABUTMENT AND ARCH RIB  
BRIDGE OVER MIDDLE FORK SALINE RIVER  
OLA-HOT SPRINGS ROAD  
GARLAND COUNTY  
ROUTE 7 SEC. 7  
ARKANSAS STATE HIGHWAY COMMISSION  
LITTLE ROCK, ARK.

Revised: 6-5-53 ABUTMENT #1 FOOTING

Drawn By: WJL Date: 2-15-54  
Traced By: WJL Date: 2-15-54  
Checked By: Date:  
BRIDGE NO. 1751 DRAWING NO. 3438

BRIDGE ENGINEER